



Accent Light, Type 2A

(SKU 94400111)

Compatibility

- DVS Insert (2005)
- DVL Insert (2005)
- 2007 Tree of Life (Rev 001) w Blower (99000153)
- 2007 Berkshire (99600113, 4) w Blower (99000153)

Packing List

- Accent Light Assembly (with strain relief plate)
- Rheostat Assembly (includes Wiring Harness)
- (2) #8 Nuts
- Wire Nut
- 35 Watt 120 Volt T4 Halogen Bulb (G6.35 Base)



Make sure power to the heater has been turned off prior to installation (unplug the power cord).



Do not connect 110-120 VAC to the gas control valve or the on/off circuit on this fireplace.



IMPORTANT INSTALLATION NOTE FOR MODELS USING THE FIREBACKS:

Follow the steps below if installing the firebacks with an accent light.

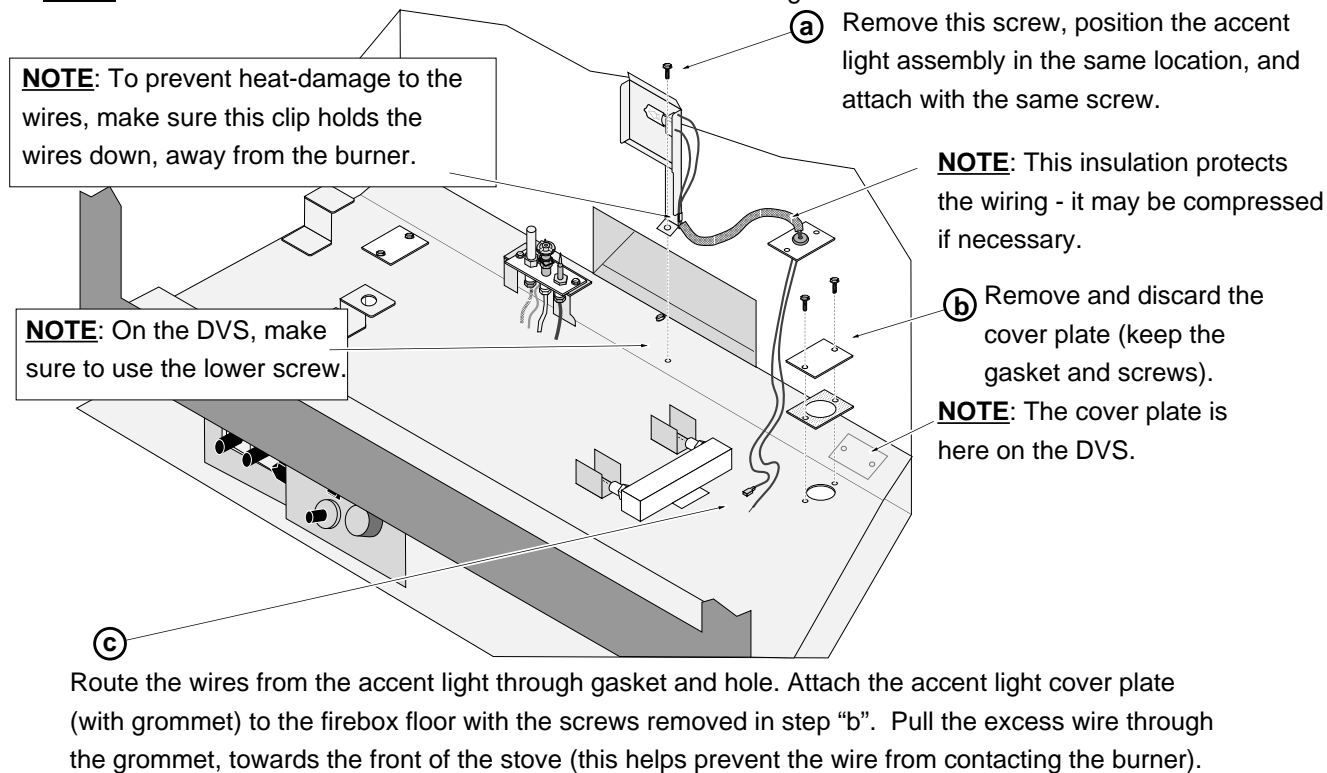
- Remove the burner (see the manual for details).
- Install the rear fireback (see the instructions included with the firebacks).
- Install the accent light.
- Replace the burner.
- Install the side firebacks (see the directions included with the firebacks).

DVS / DVL Installation

NOTE: The bulb is shipped separately. Do not touch the bulb – oil or other residue left on the bulb may lead to premature bulb failure. Use a cloth or paper towel to handle the bulb.

- 1 Remove the burner (see the manual for details).
- 2 Install the accent light as shown below.

NOTE: the illustrations below show a DVL Insert - the accent light installs in the same manner on a DVS Insert.

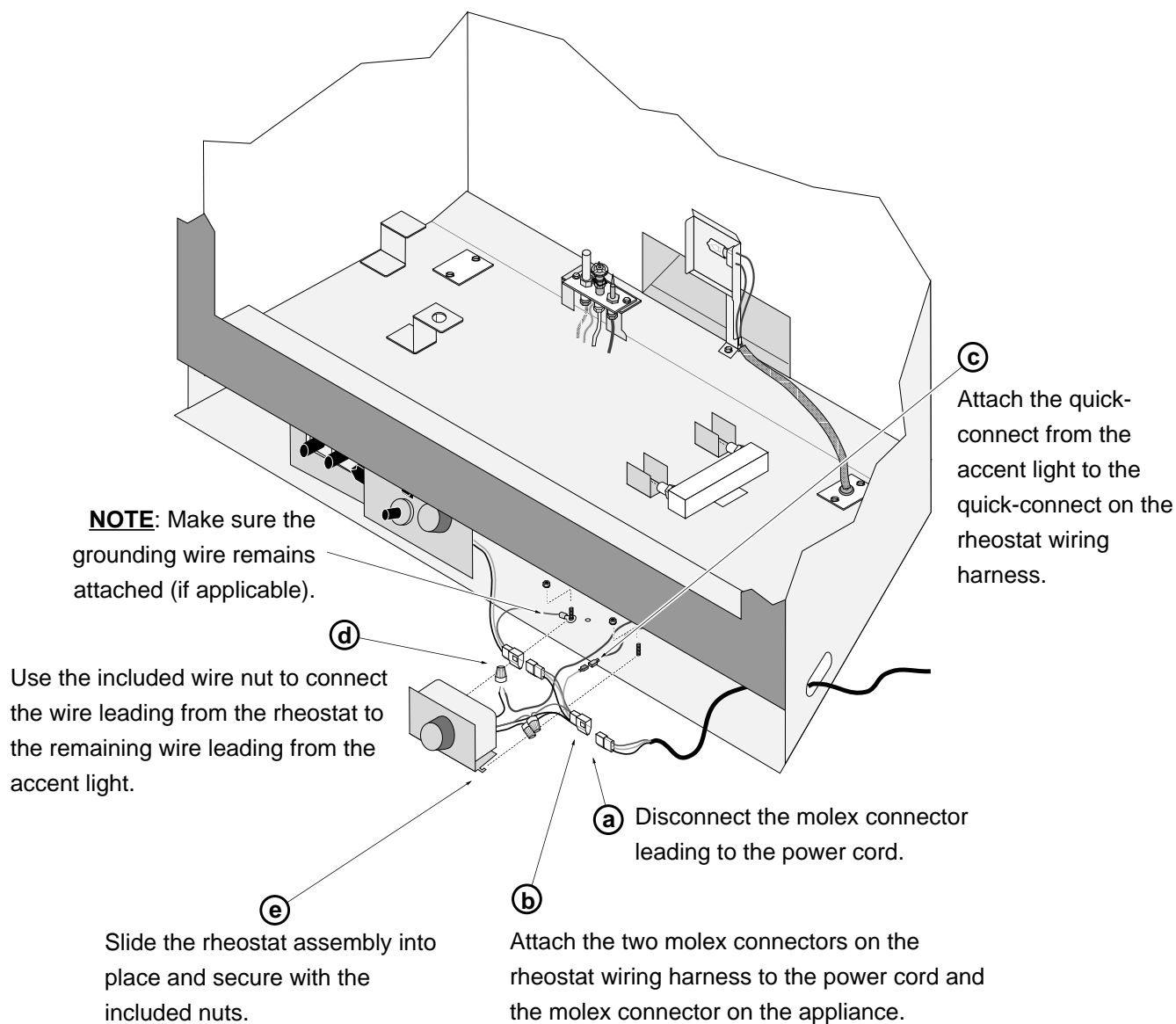




Accent Light, Type 2A

(SKU 94400111)

- 3 Attach the rheostat assembly and wiring harness as shown below.



Make sure all wiring does not contact the firebox or blower (use wireties if necessary).

- 4 Install the bulb into the accent light (take care to not touch the bulb).
- 5 Restore the firebox to the correct configuration (replace the burners, etc.).



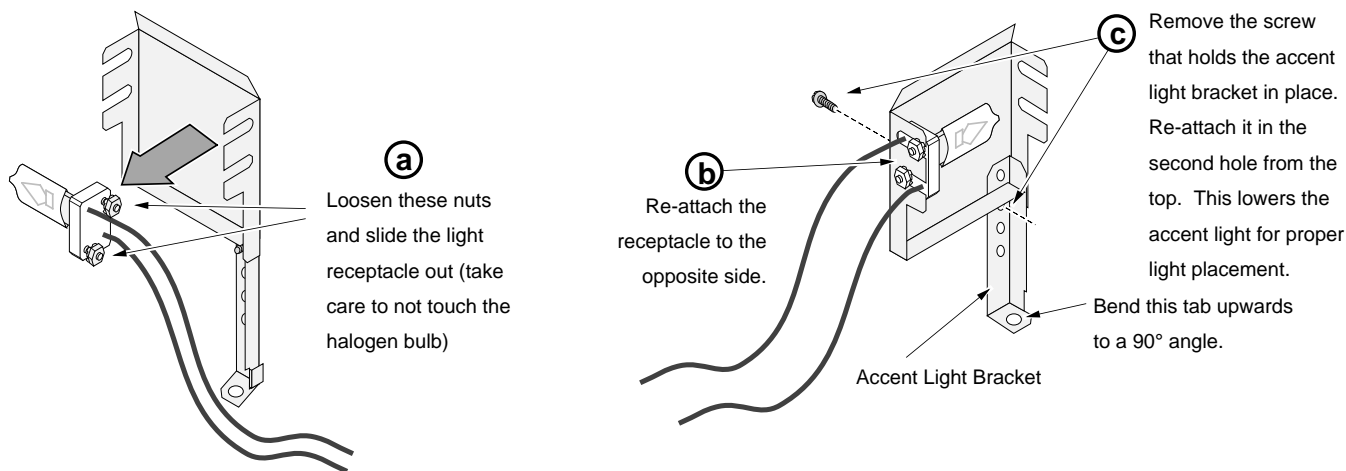
Accent Light, Type 2A

(SKU 94400111)

Tree of Life / Berkshire Installation

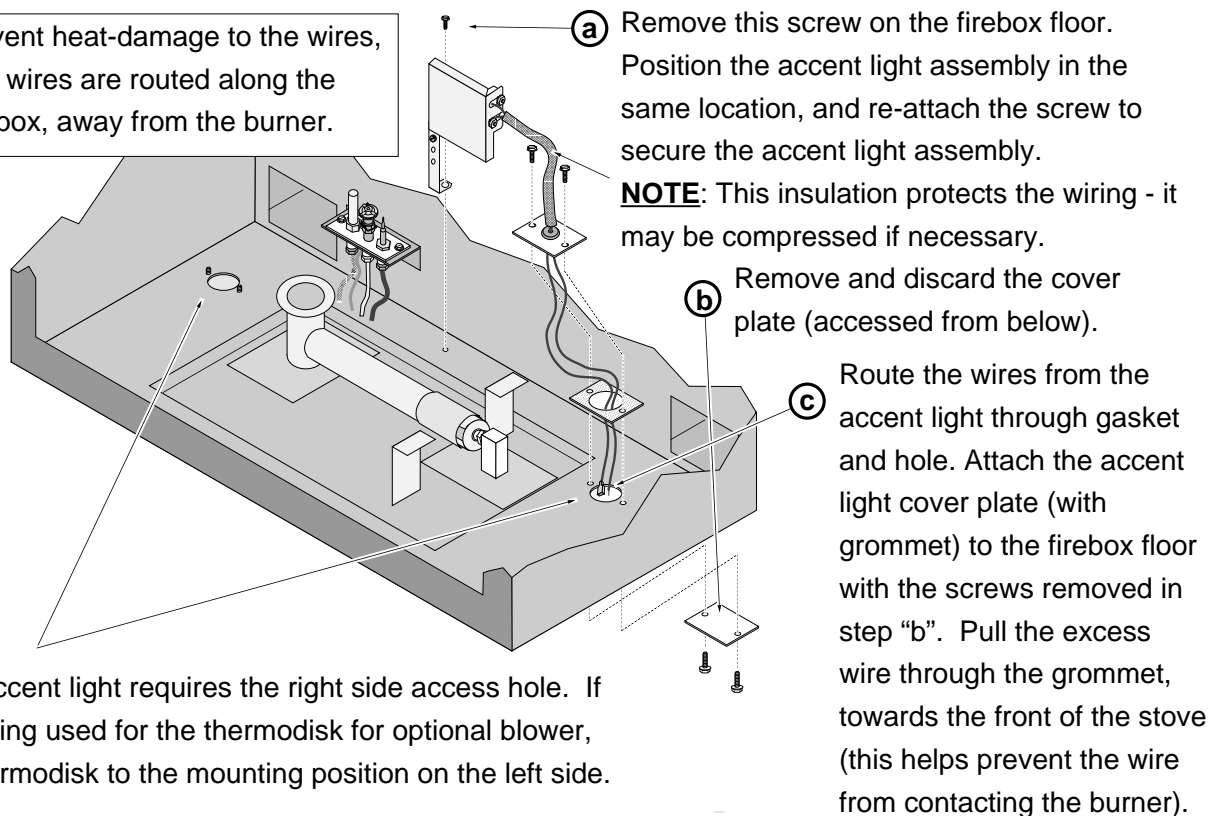
NOTE: The bulb is shipped separately. Do not touch the bulb – oil or other residue left on the bulb may lead to premature bulb failure. Use a cloth or paper towel to handle the bulb.

- 1 Modify the accent light assembly as shown in the illustration below.



- 2 Remove the burner from the stove (see owner's manual for details). Install the accent light assembly as shown in the illustration below.

NOTE: To prevent heat-damage to the wires, make sure this wires are routed along the floor of the firebox, away from the burner.



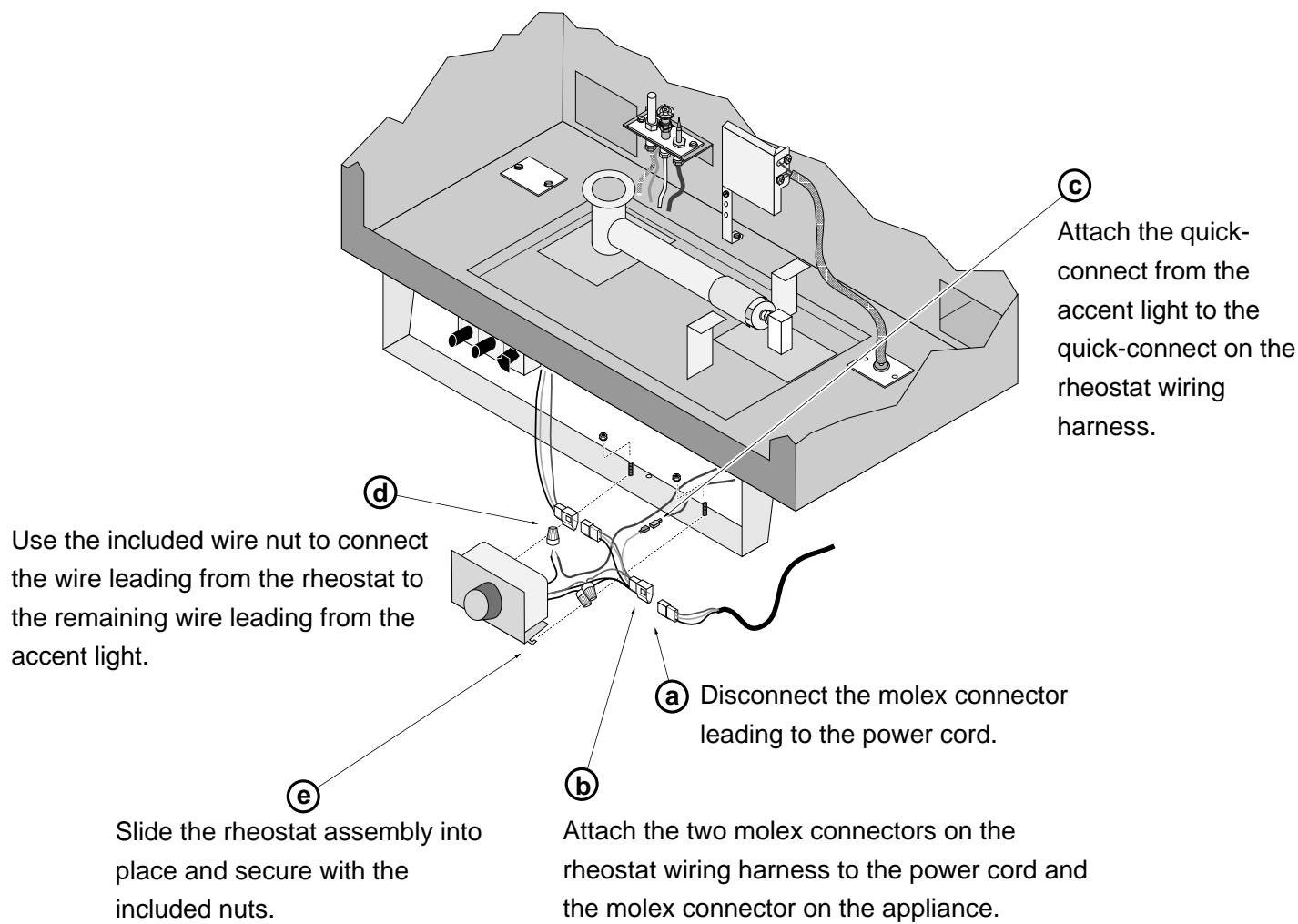
NOTE: The accent light requires the right side access hole. If this hole is being used for the thermodisk for optional blower, switch the thermodisk to the mounting position on the left side.



Accent Light, Type 2A

(SKU 94400111)

- 3 Attach the rheostat assembly following the directions below.



Make sure all wiring does not contact the firebox or blower (use wireties if necessary).

- 4 Install the bulb into the accent light (take care to not touch the bulb).
- 5 Restore the firebox to the correct configuration (replace the burners, etc.).



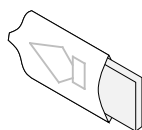
Accent Light, Type 2A

(SKU 94400111)

Accent Light Operation

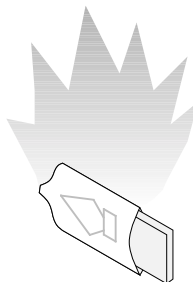
OFF

Turn the dial all the way counter-clockwise until it clicks off.



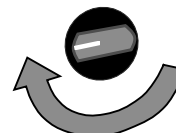
LOW

Turn the dial 180° clockwise until the light begins to glow.



HIGH

The high position is all the way clockwise.



NOTE: The accent light responds best when turned to high, then turned down to the desired light level.

Bulb Replacement

NOTE: Do not touch the bulb – oil or other residue left on the bulb may lead to premature bulb failure. Use a cloth or paper towel to handle the bulb.

The accent light must be replaced with 35 Watt 120 Volt T4 Halogen Bulbs (G6.35 Base) – available at most hardware stores. To replace the bulb, simply remove it from the socket and insert the new bulb (pin orientation does not matter).